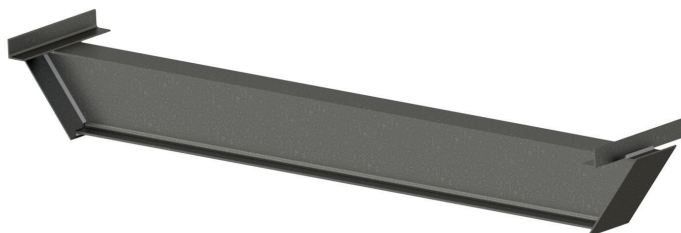


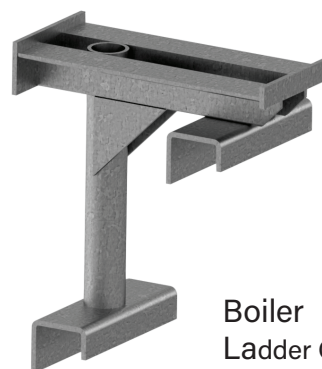
EXCEL MODULAR BOILER COMPONENTS

Part Number	Description	Length (ft.)	Weight (lbs.)	Maximum Supported Load (lbs.)
Bbeam-HV	Heavy-Duty Boiler Beam*	6'-8"	152	7,500
Bbeam-LT	Light-Duty Boiler Beam*	6'-8"	120	3,750
Bchair	Boiler Ladder Chair		16.5	5,500
BL7	7' Boiler Ladder	7	39.6	7,500
BL3	3' Boiler Ladder	3	16.5	7,500
SH1	Shoring Head for Boiler Ladders		1.5	7,500
BL-Start	Boiler Starter Ladder	1	24	7,500

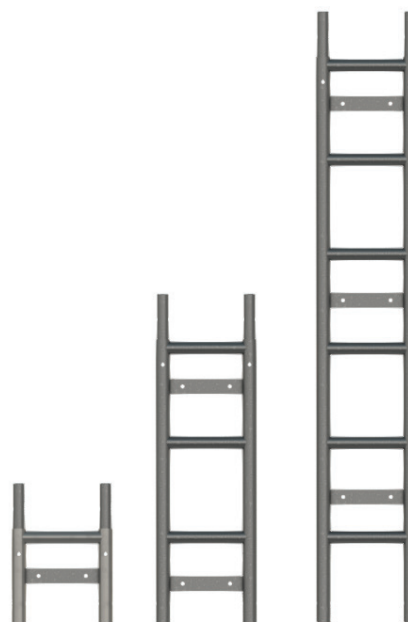
*Third-party manufactured component. Data may vary.



Boiler Beam



Boiler Ladder Chair



Boiler beams are six (6) feet-eight (8) inches long and come in two (2) strengths depending on the weight that will be applied.

Boiler ladder chairs are attached to the boiler ladders and provide a level surface for the leveling jacks to rest.

Boiler ladders rest on the slope of the boiler tubes and the boiler beams.

BUILD NOTES:

1. All OSHA and plant regulations governing safety shall be followed, whichever is stricter.
2. The area supporting the boiler beams must be able to handle the required imposed loads.
3. Attached equipment (i.e. verticals, etc.) may be the load limiting factor.

All material must be inspected prior to use! See inspection guidelines on page 43 of this manual.

BOILER COMPONENTS